

**We are a global community
of talented individuals
specialising in the design
and management of complex
engineering projects
of all sizes.**

70 years of development

1950
Luigi Pini founds in Lugano Studio d'ingegneria Pini

1995
Pini Associati SA the firm becomes a public limited company with shareholders

2013
Development in Switzerland with the acquisition of KBM SA (Sion) and Straub AG (Chur-Baden). Rebranding into Pini Swiss Engineers SA

2014
Opening of the Zurich branch in Switzerland. Expansion outside national borders with the first branch in Austria (Innsbruck)

2015
Establishment of Pini Italia (Lomazzo)

2017
Establishment of Pini France (Paris)

2019
Establishment of Pini Israel (Modif in)

2020
Opening of Lausanne branch in Switzerland

2021
Adoption new "Glocal" strategy. Opening Rome, Fribourg, Roveredo branches. Acquisition of Anastasi & Partners SA in Locarno

2022
Swiss companies merge into Pini Group SA.

Acquisition of JLCM in Lisbon (Portugal), EBEL in São Paulo (Brazil), SEPI in Trento (Italy), INEA in Latina (Italy) and ALP in Visp (Switzerland). Opening of St. Moritz, Rapperswil, Turin branches.

Establishment of Pini Australia in Melbourne, Pini Norway in Oslo and Pini Group USA in Washington DC. Acquisition Geodata

2023
Opening of Aarau branch. New Business Unit Latin America. New Business Unit Middle East & North Africa. Opening of the new Headquarters in Grono, Switzerland.

2024
Opening of Basel, Milan, Cairo, Tunis and Abu Dhabi branches.



Key numbers

More than **1200** employees

50 branch offices

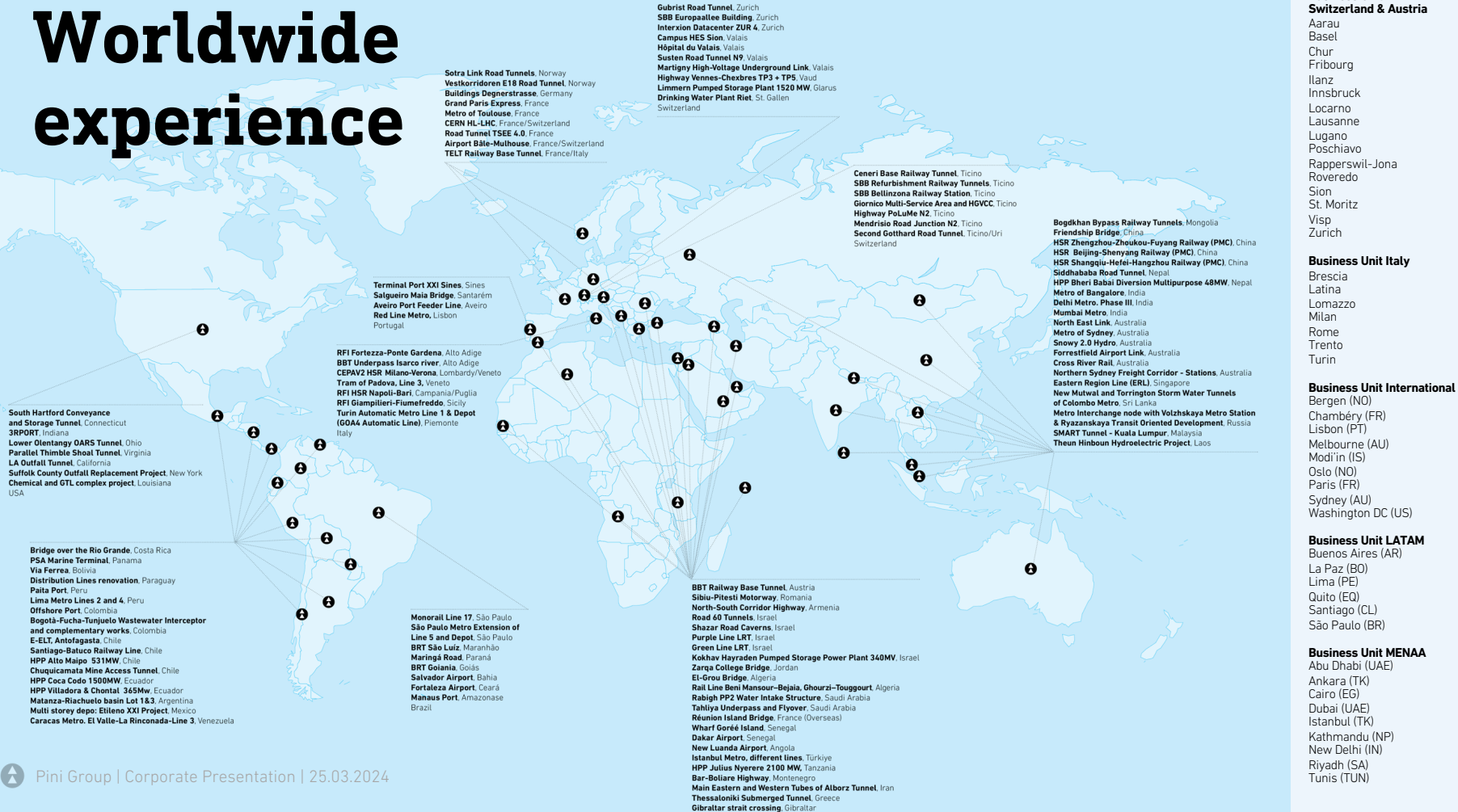
International footprint in over **50** countries

126 CHF mln turnover

More than **1000** current projects

More than **5000** km of tunnel

Worldwide experience



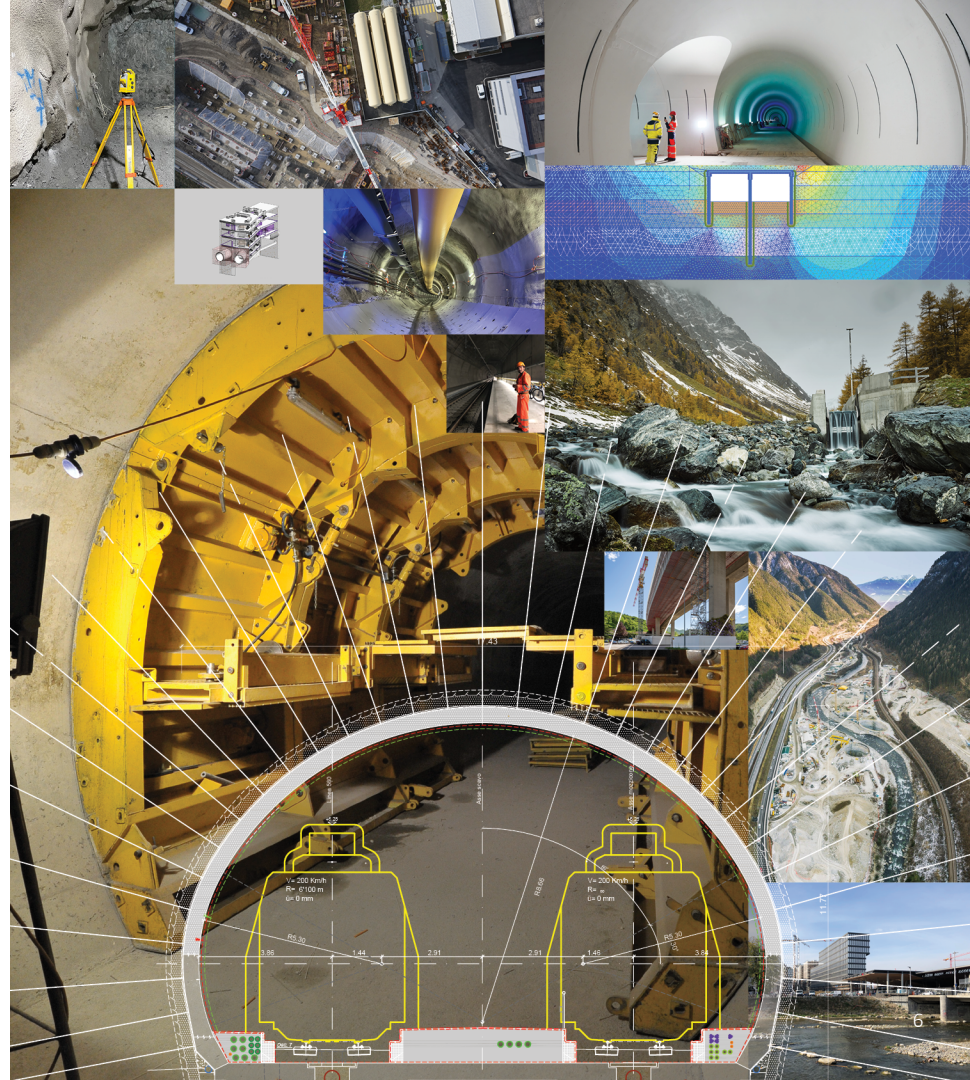
- Business Unit Switzerland & Austria**
 Aarau
 Basel
 Chur
 Fribourg
 Ilanz
 Innsbruck
 Locarno
 Lausanne
 Lugano
 Poschiavo
 Rapperswil-Jona
 Roveredo
 Sion
 St. Moritz
 Visp
 Zurich
- Business Unit Italy**
 Brescia
 Latina
 Lomazzo
 Milan
 Rome
 Trento
 Turin
- Business Unit International**
 Bergen (NO)
 Chambéry (FR)
 Lisbon (PT)
 Melbourne (AU)
 Modi'in (IS)
 Oslo (NO)
 Paris (FR)
 Sydney (AU)
 Washington DC (US)
- Business Unit LATAM**
 Buenos Aires (AR)
 La Paz (BO)
 Lima (PE)
 Quito (EQ)
 Santiago (CL)
 São Paulo (BR)
- Business Unit MENAA**
 Abu Dhabi (UAE)
 Ankara (TK)
 Cairo (EG)
 Dubai (AE)
 Istanbul (TK)
 Kathmandu (NP)
 New Delhi (IN)
 Riyadh (SA)
 Tunis (TUN)

Our services

360°

Throughout the whole lifecycle of a project

- Project Management
- Design for public and private clients
- Independent checking engineer
- Site & Construction Management
- Claim and risk Management
- Inspection & Assessment
- Measurement & Survey
- Digital Support



Our Group Management

A team ready for the challenge



Andrea Galli
Group Chief Executive Officer
Head of Business Unit LATAM



Davide Merlini
Group Chief Technical Officer



Cristina Pagani-Boiani
Head of Business Unit
Switzerland & Austria



Andrea Polli
Head of Business Unit
Italy



Roberto Schürch
Head of Business Unit
International



Aymen Cheikh Mhamed
CBDO
Head of Business Unit MENAA

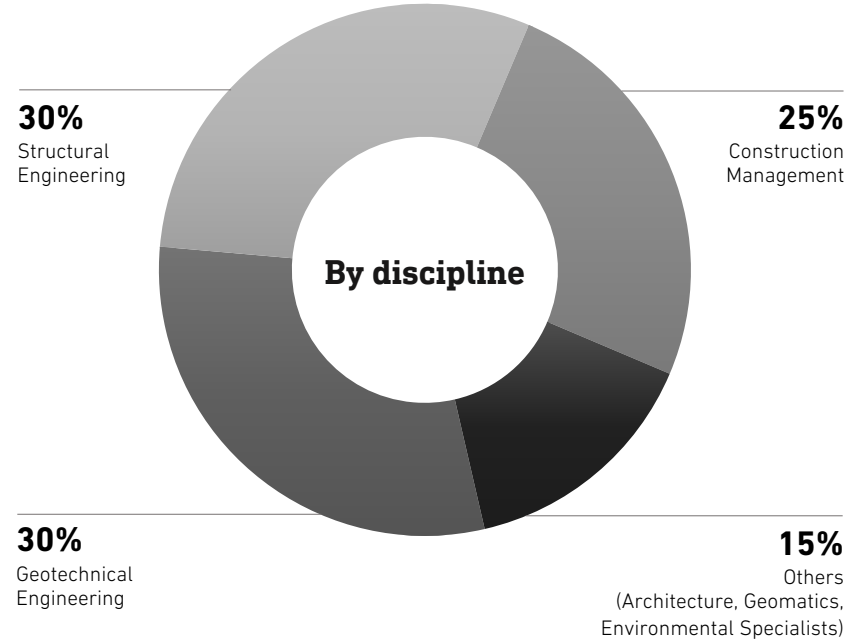
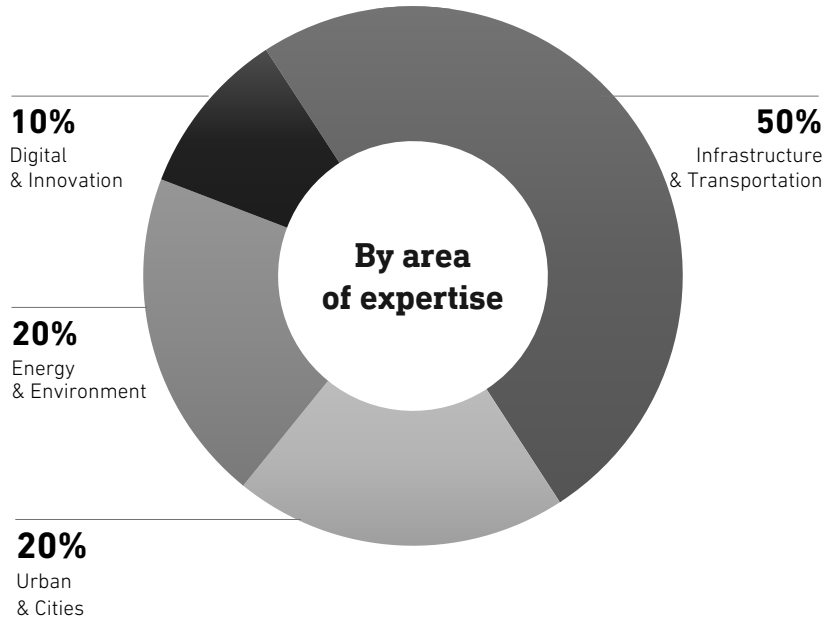
Organizational chart

Group Management

Business Unit Switzerland & Austria	Business Unit Italy	Business Unit International	Business Unit LATAM	Business Unit MENAA	Group Services
Market Area North Zurich Rapperswil-Jona Aarau Basel	Lomazzo	Europe	Perù Lima	Middle East	Finance
Market Area East St. Moritz Chur Illanz	Milan	Norway Bergen Oslo	Chile Las Condes Santiago	United Arab Emirates Abu Dhabi Dubai	Human Resources
Market Area South Lugano Roveredo Locarno Visp	Rome	France Chambéry Paris	Argentina Buenos Aires	Saudi Arabia Riyadh	Innovation
Market Area West Sion Lausanne Fribourg	Trento	Israel Modi'in	Ecuador Quito	North Africa	Marketing & Communication
Construction Management Austria Switzerland	Turin	Portugal Lisbon	Bolivia La Paz	Tunisia Tunis	Strategy & Business Development
	Latina	North America	Brazil São Paulo	Egypt Cairo	Sales
	Brescia	USA Washington DC		Asia	Quality
	Construction Management	Oceania		India New Delhi	
		Australia Melbourne Sydney		Nepal Kathmandu	
				Türkiye Ankara Istanbul	
Austria Innsbruck					



Our offering



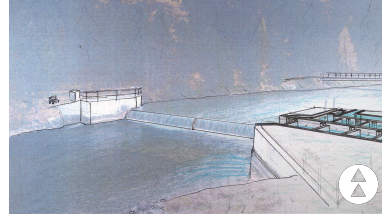
Our area of expertise



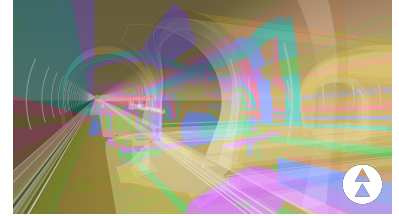
**Infrastructure
& Transportation**



**Urban
& Cities**



**Energy
& Environment**



**Digital
& Innovation**

Our expertise connects people

Our core business includes the largest infrastructure projects of our time, requiring cost efficient and sustainable solutions in the long terms as well as designs and constructions of all types of traffic routes at local, national, and international levels.

- **Roads & Highways**
- **Bus Rapid Transportation (BRT)**
- **Railways & Highspeed Rail (HSR)**
- **Metro**
- **Light Rail Transit (LRT)**

Connecting Norway

Sotra Link

FCC Construcción, Webuild, SK Engineering & Macquarie Corporate Holdings – Owner
Statens Vegvesen
Road tunnels (11km D&B).

Norway
2020 – 2027
1'250'000'000 € investment

Tender design
Detail design
Technical site supervision



Crossing the Alps

Telt Euralpin base tunnel

TELT SAS

Railway tunnel (57,5 km) – TBM and D&B.

France / Italy

2018 – 2028

9'300'000'000 € investment

Final design
Tender design
Detail design
Site supervision



Red line across Lisbon

Red Line Extension Lisbon

Metropolitano de Lisboa EPE

New Metro Line São Sebastião – Alcântara (4 km).

Portugal

2021 – 2022

400'000'000 € investment

Preliminary design

Tender design



Urban & Cities

Creating tomorrow's way of life

We help our clients to adapt to changing realities providing open and reliable partnerships for architects in the implementation of challenging and innovative projects, integrated solutions for buildings and urban areas.

- Buildings
- Airports
- Ports
- Datacenters

Next level healthcare

Spital Wallis Sion

Spital Wallis Sion

Expansion and renovation of the Valais Hospital in Sion.

Switzerland

2016 – 2023

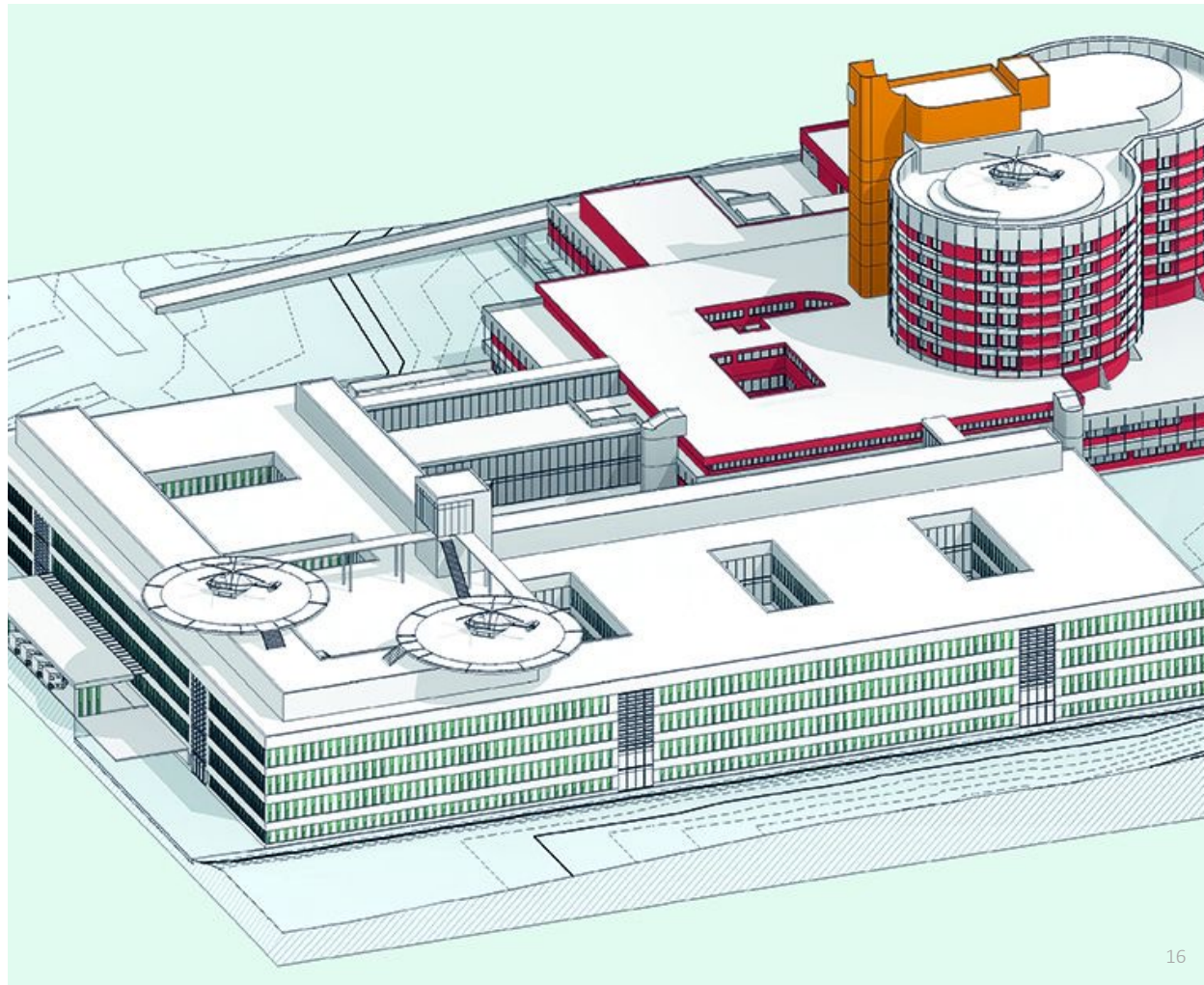
235'000'000 CHF investment

Preliminary design

Detail design

Tender design

Final design



Let's fly over Senegal

Blaise-Diagne Int. Airport

Eiffage Senegal

Building an aircraft maintenance and repair center (MRO) and a CARGO terminal.

In particular taxiways, aircraft parking areas and access roads to the parking stands (taxilanes).

Senegal

2021 – 2025

Investment: confidential

Detail design

Technical site supervision



Berthing in Perù

Port of Paita, Phase 1, 2, 3

Etermar

Terminales Portuarios Euroandinos (TPE)

New terminal berth (300 m + 60 m + 364 m length).

Perù

2021 – 2022 (Phase 2)

145'000'000 USD investment

Preliminary design

Final design

Technical site supervision



We empower ideas for a future of sustainable energy

From the feasibility study to implementation, we provide reliable support and advice. Generating, distributing, storing, and consuming energy is becoming increasingly complex. We are partners with our customers in analyzing these challenges and seeking solutions to ensure that their investments are sustainable and ageless.

- **Pump Storage & Hydropower Plants**
- **Energy Transmission & Distribution**
- **Water Distribution & Outflow Systems**
- **Waterways & Water Management**
- **Natural Hazards Assessment & Solutions**

1480 MW pure power

Linth – Limmern

Axpo AG Baden

New Hydroelectric underground complex, with an increase capacity from 480 MW to 1'480 MW.

Switzerland

2001 – 2019

2'000'000'000 CHF investment

Preliminary design

Tender design

Detail design

Technical site supervision



Back to nature

The Brinaz

**DGE-EAU, communes de Grandson,
Valeyres-sous-Montagny,
Montagny-près-Yverdon**

Securing and renaturation of a watercourse in a peri-urban environment over a distance of about 1000 m with the restoration of a large number of engineering structures.

**Switzerland
2019 – 2021
9'000'000 CHF investment**

Preliminary design
Tender design
Detail design



A natural recycler

TicInsect production site

Ticinsect

The Swiss start-up TicInsect aims to help find a solution to the problem of the food waste, which affects an important part of the industrialised countries, with initiatives based on the principle of the circular economy. Thanks to black soldier flies, the company obtains animal feed using waste from the local food industry.

Switzerland

2022 – 2023

2'000'000 CHF investment

Preliminary design

Final design



Digital & Innovation

Looking beyond the horizons of tomorrow

We use new technologies and our capacity to identify the trends that shape the future. For our clients. For the next generations. We combine innovation, analytical skills, and digital creativity with our passion to do better.

- **Digital twins & Artificial Intelligence**
- **Building Information Modeling (BIM)**
- **Virtual/Augmented Reality**
- **Metaverse Architecture**
- **Innovative Measurements & Drones**
- **Traffic Planning & Technology**



Metaverse is here

Metaverse Gallery

Helm High-End labs for the Metaverses
Architectural Project – In the Metaverse
Decentraland (Ethereum blockchain based).

Metaverse
2022
Partnership

Metaverse Real Estate
Preliminary design
Final design



Hawk's eye

Bypass Agno - Bioggio

Canton Ticino

Aerial (helicopter) survey of approx. 25 Ha of land for creation of digital model and orthophotos.

Switzerland

2022

35'000 CHF service

Aerial survey (Lidar LIDAR: RIEGL VUX 120)

Ground digital model



Scan 2 BIM

CityPop

Artisa

Mandate for 3D terrestrial lidar scanning, georeferencing in LV95, point cloud assembly, cleaning, etc.

Lausanne - Vaud

2022

Confidential budget

- Geomatics
- Scan 2 BIM



© 2023

www.pini.group

Prepared by

Luca Cereghetti

Chief Communication Officer

Pini Group

Version 25.03.2024